

AI Powered Travel Planner

Sangamanath BH, Preethi K, Suchitra Nagur, Sagar N

Vemana Institute of Technology,
Koramanagala, Bangalore

sangamanathbh_2021@vemanait.edu.in, kpreethi@vemanait.edu.in
suchitraonagur@vemanait.edu.in, sagarn_2021@vemanait.edu.in

Jagadamba A

Assistant Professor, Department of CSE
Vemana Institute of Technology
Koramanagala, Bangalore



Publication History:

Manuscript Reference No: IJIRIS/RS/Vol.11/Issue02/API10090

Research Article | Open Access | Double-Blind Peer-Reviewed | Article ID: IJIRIS/RS/Vol.11/Issue02/API10090

Received: 02, April 2025 Revised: 14, April 2025 Accepted: 25, April 2025 Published Online: 05, May 2025, Volume 2025

Article ID APIS10090 <https://www.ijiris.com/volumes/Vol11/iss-02/11.APIS10090.pdf>

Article Citation: Sangamanath, Preethi, Suchitra, Sagar, Jagadamba (2025). AI Powered Travel Planner, IJIRAE:: International Journal of Innovative Research in Information Security, Volume 11, Issue 02, Pages 131-137

doi-> <https://doi.org/10.26562/ijiris.2025.v1102.11>

BibTex key: Jagadamba@2025AI



Copyright: ©2025 This is an open access article distributed under the terms of the Creative Commons Attribution License; which Permits unrestricted use, distribution, and reproduction in any medium, provided the original author and source are credited.

Abstract: In this article, we introduce an AI-driven travel planning tool that offers consumers looking to arrange vacations a thorough and customized experience. Our system creates destination-specific instructions and dynamic trip itineraries based on user choices by utilizing Google Gemini's extensive language models. Additionally, an integrated chat system created using Daphne and Django Channels allows users to have conversations with friends in real time. Additionally, the platform facilitates easy reservations for hotels, flights, and rental vehicles through third-party APIs, making it a comprehensive travel planning tool. The application uses SQLite as the database, HTML/Tailwind CSS/JavaScript for the frontend, and the Django framework for the backend functionality. This study describes the platform's architecture, features, and implementation, showing how AI and real-time collaboration may improve and streamline the vacation planning process.

Keywords: Hotel Booking, Flight Booking, Car Rentals, Tailwind CSS, Daphne, Django Channels, Artificial Intelligence, Travel Planning, Google Gemini, Django, Real- Time Chat, Personalization.

I. INTRODUCTION

Planning a trip is frequently seen as an exciting stage that comes before the trip itself. However, it can become a time-consuming and daunting procedure with several decision-making layers. From choosing destinations and determining the best time to visit, to researching points of interest, connecting with other travelers, and organizing transportation and hotel reservations, the process is rarely simple. Travelers often find themselves switching between multiple websites, blogs, and apps because of the overwhelming volume of available information. This disjointedness often leads to confusion, missed information, and poor coordination in planning. More travelers now expect personalized trips that match their unique interests and needs. Modern travelers prefer trips that align with their personal preferences, budgets, and availability instead of one-size fits-all packages. They seek immersive experiences enriched with local knowledge, cultural depth, and personal relevance not just tourist spots. Many people prefer to travel with friends or family, but this adds challenges in coordinating and communicating effectively during the planning process. Existing travel platforms often aren't equipped to handle the complexity of shared itineraries and preferences.

There is rising demand for intelligent, all-in-one platforms that assist users in finding information and making decisions tailored to their needs. It's not just about convenience anymore people want a smart travel assistant that knows what they're looking for, helps them plan accordingly, shares accurate info, and makes it easy to coordinate with others. This study presents a clever travel planner that uses artificial intelligence to simplify and customize the entire trip planning process in order to meet these demands. By inputting their travel preferences or favorite destinations, users can receive AI-generated itineraries and travel guides that are tailored to their interests and educational needs. Instead of manually searching for details, they are presented with concise summaries that capture the essence of a destination, highlighting its historical significance, cultural appeal, and key attractions. Beyond simplifying the planning process, the platform enables real-time communication, allowing users to collaborate, share ideas, and stay organized. It acts as a one-stop platform for all your vacation needs, allowing users to plan their trip and book everything they need flights, hotels, and transportation right from the same interface. This eliminates the need to switch between multiple tabs, fragmented communication, and endless searches, shifting the focus of travel planning to inspiration and enjoyment rather than logistics. Today's travelers want systems that truly get them ones that can adapt to their unique needs, handle last-minute changes, and offer quick, useful recommendations.



Traditional travel planning, on the other hand, can be a headache. It usually means bouncing between different websites, trying to coordinate with friends, and juggling bookings all over the place, which just adds to the frustration and inefficiency. What's needed is an integrated, user-friendly process that brings together planning, collaboration, and execution in a seamless and responsive way. Ultimately, this travel organizer is more than just a tool; it is a personalized, intelligent, and collaborative companion that transforms the way individuals and groups approach their journeys. In essence, this travel organizer goes beyond being a simple tool; it acts as a smart, personalized, and collaborative assistant that transforms the way individuals and groups plan and experience their trips.

II. RELATED WORK

In recent years, several AI-powered travel planning systems have emerged, each aiming to simplify itinerary creation, booking processes, and personalized travel experiences. In [1], a travel organizer coordinating Google Maps API with conventional web advances such as HTML, JavaScript, and PHP, advertising real-time out and personalized plans, in spite of the fact that it needs budget-based AI arranging ChatGPT-based arrangements through characteristic language interaction but doesn't bolster genuine-time upgrades. While [3] employs A* path finding and behavioral machine learning to support route optimization and user-centric personalization, it lacks support for real-time travel guidance and intelligent suggestions.

Recent developments in travel planning systems have addressed various aspects such as collaboration, budget management, and offline usability. For instance, the system discussed in [4] applies collaborative filtering techniques to assist users in budget planning and enhance their overall experience, but it lacks full integration for end-to-end travel bookings. In a similar direction, [5] employs clustering methods combined with Google Maps to enable offline access; however, it lacks group-oriented features like shared planning or in-app messaging. The work in [6] explores the integration of collaborative filtering and tag-based search to enhance recommendations but fails to provide effective budget handling mechanisms.

More sophisticated approaches, like the one in [7], apply heuristic optimization to enrich the user experience—especially through immersive tools such as street view navigation. Still, these solutions often do not generate full travel plans. Other systems, such as [8], leverage image recognition models to deliver more visually aligned and personalized suggestions. However, they tend to lack core features needed for managing bookings and itineraries. Recent advancements in [9] and [10] combine generative AI with live data from external APIs to create smarter, automated travel schedules. Although these advancements show significant progress, key features like real-time group collaboration and fully integrated end-to-end travel management are still absent in many current solutions.

III. SYSTEM ARCHITECTURE

In addition to traditional travel tips, modern travelers are increasingly looking for solutions that understand their specific needs, adapt to unexpected changes, and provide relevant suggestions in real time. The traditional planning approach, which requires browsing multiple websites, coordinating separately with friends, and managing bookings, often results in frustration and inefficiency. To streamline the process, planning, collaboration, and execution should all be integrated into a single, easy-to-use system.

A. User Interaction Layer:

The user begins by accessing the platform through a web browser. Authentication is managed through a login/signup system, ensuring personalized access for each user. Once authenticated, users interact with Django-rendered templates that form the front-end interface, which is built using HTML, Tailwind CSS, and JavaScript.

B. Backend Processing Layer:

All client demands are directed through Django views, which serve as the center rationale controllers of the framework. These views handle intuitively with:

- The client database, where profile information, saved plans, and past chat history are put away.
- An AI benefit, which produces personalized travel plans and chronicled guides through API calls (e.g., Google Gemini).
- An outside booking framework, coordination inn, car rental, and flight bookings through third-party APIs.

C. Communication Layer:

The platform supports real-time chat among users for collaborative planning. This is implemented using Django Channels and Daphne, enabling Web Socket-based two-way communication for interactive discussions. The over Figure 1 outlines the interaction between the client, Django components, database, AI administrations, third-party APIs, and real-time chat module. The architecture of the framework is organized into several integrated layers. The front end, built with HTML, Tailwind CSS, and JavaScript, ensures a responsive user interface that works seamlessly across both web and mobile devices. On the back end, Django handles tasks such as processing user input, managing authentication, handling sessions, and facilitating API interactions. A built-in AI engine is responsible for generating personalized itineraries based on individual user preferences. All user-related data, including profiles, travel details, chat records, and booking information, is stored in a centralized database. Additionally, an admin dashboard is included to facilitate system monitoring, content management, and usage analytics.

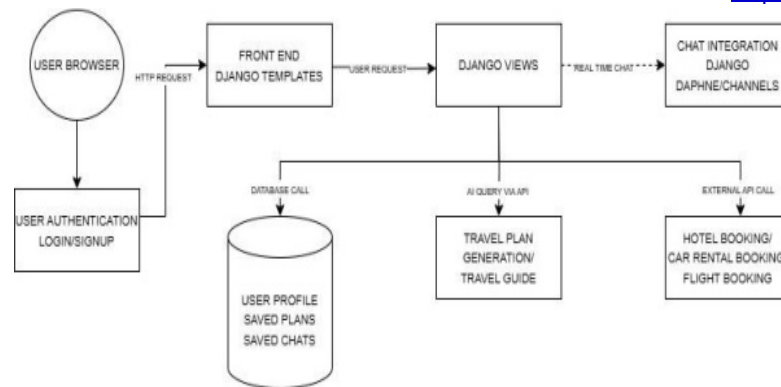


Fig 1: System Architecture of the AI-Powered Travel Planner Application

IV. METHODOLOGY

Our AI-powered travel planner app is designed with modular architecture. The system is composed of the following primary components:

A. Technology Stack

- Backend Frame work: Django, a robust Python-based web framework, forms the backbone of the application.
- Chat Integration: Web Socket support is provided through Django Channels with Daphne for real-time communication.
- AI Integration: Google Gemini API for generating travel itineraries and destination information
- Frontend: The user interface is created using HTML, Tailwind CSS, and JavaScript, ensuring responsiveness and interactivity.
- Database: QLite, a light weight relational database, is used to store user data and travel details.
- External APIs: Several external APIs are integrated to facilitate seamless bookings for flights, accommodations, and car rentals.

B. System Modules User Module

Clients can sign up, log in, and personalize their travel inclinations. Inclinations are put away and utilized as setting for AI-based travel arrange era.

AI Travel Planner

When clients input a goal or common travel inclinations, this module communicates with the Google Gemini API to:

- Produce a full schedule with proposals for places to visit, nourishment, transportation, and exercises.
- Provide short travel guides or historical context for specific landmarks.

Chat Module

Built using Django Channels and Daphne, the real-time chat module allows users to:

- Discuss plans with friends
- Share itinerary links
- Coordinate group travel within the app

Booking Module

This module uses external API s to fetch real-time data and support:

- Hotel bookings
- Car rentals
- Flight reservations

All booking actions are seamlessly integrated, enabling users to complete travel planning end-to-end within the platform.

A. Work flow

The workflow of the AI-powered travel planner application is illustrated in Figure 2. It presents a streamlined and intuitive user journey from accessing the homepage to planning, sharing, and booking travel experiences, supported by AI and real-time communication features. The application begins at the Home Page, where users can choose to explore travel plans or proceed to Login/Register. Once logged in, users can access the following major modules:

- Create Plan Using AI: Users input their travel preferences, and the system leverages Google Gemini to generate a personalized itinerary. The plan can then be saved or shared.
- Travel Guide: Allows users to input the name of a destination (e.g., "Taj Mahal") to receive concise, AI-generated historical and cultural information.
- Travel Booking: Users can book accommodations, flights, and car rentals via redirections to trusted third-party APIs integrated seamlessly into the platform.
- Chat Application: Supports real-time chat between users to discuss travel plans and coordinate group travel.
- User Profile Management: Users can view and edit their profiles and revisit saved travel plans. The entire workflow is designed to be modular and user-centric, ensuring flexibility, personalization, and ease of use for all travelers.

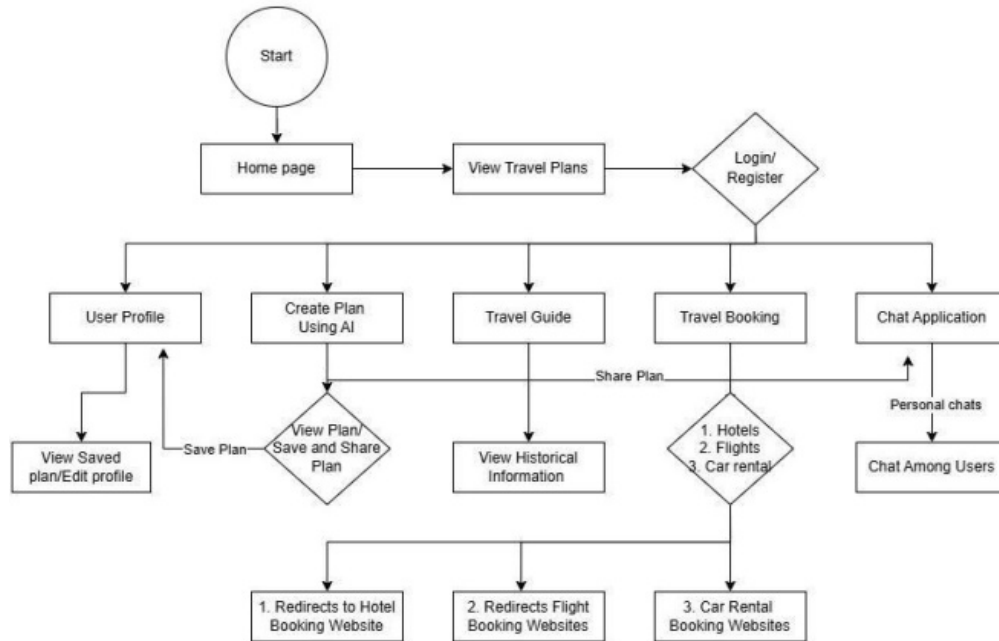


Fig 2: Work flow Diagram of the AI-Powered Travel Planner Application

This above diagram captures the end-to-end user flow from login and profile access to AI-generated planning, information retrieval, travel booking, and real-time chat interaction.

V. RESULTS

The AI-powered travel planner web application was successfully developed and deployed with a fully functional frontend and back end. The platform enables users to register, plan trips, interact with others via chat, and make bookings all through a single, integrated interface. The screenshots below illustrate the main modules and interfaces of the system.

A. Homepage

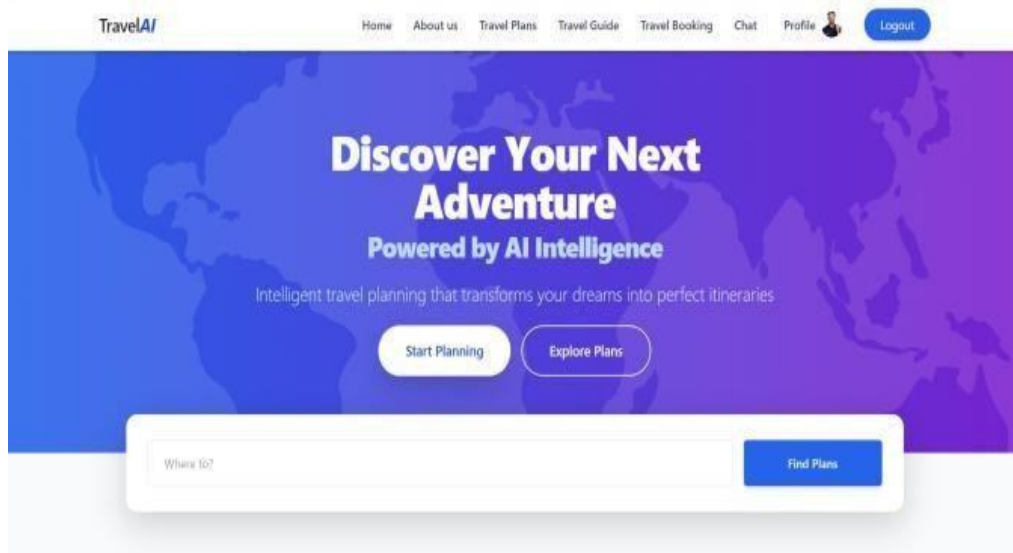


Fig 3 The home page

In Figure 3 introduces users to the core services offered by the travel planner application. It provides a clean, user-friendly interface with options for registration, login, and exploring features.

B. Travel Plan

In Figure 4, users are shown the interactive form for entering their travel preferences, including destination, duration, interests, and budget. Based on the input, the backend powered by Google Gemini generates a personalized travel plan.

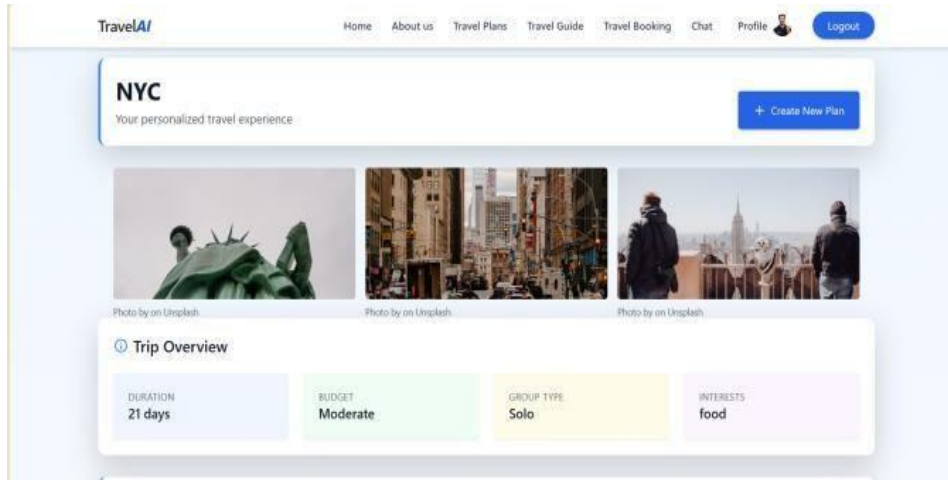


Fig 4 Travel Plan

C. Travel Guide

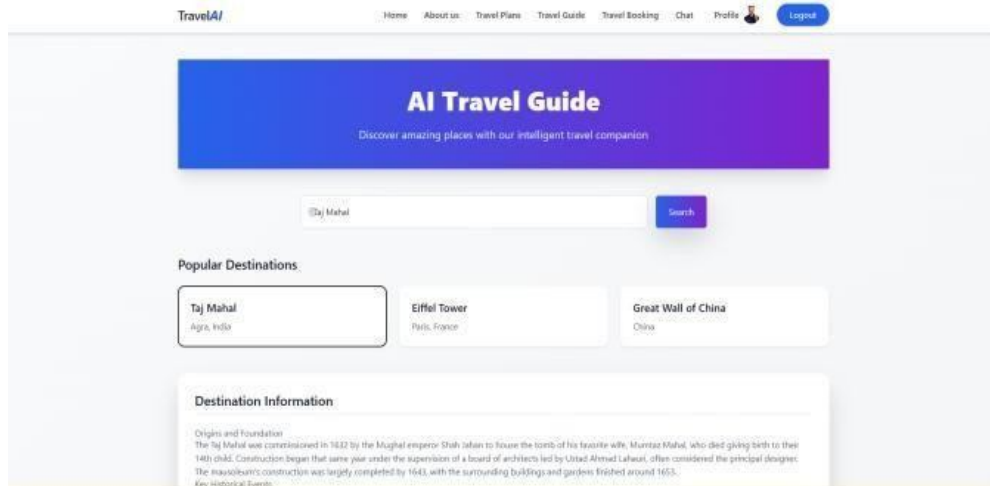


Fig 5 Travel Guide

In Figure 5, users are shown the interactive form for entering their travel places. Based on the input, the backend powered by Google Gemini generates a personalized travel guide information.

D. Booking Interface

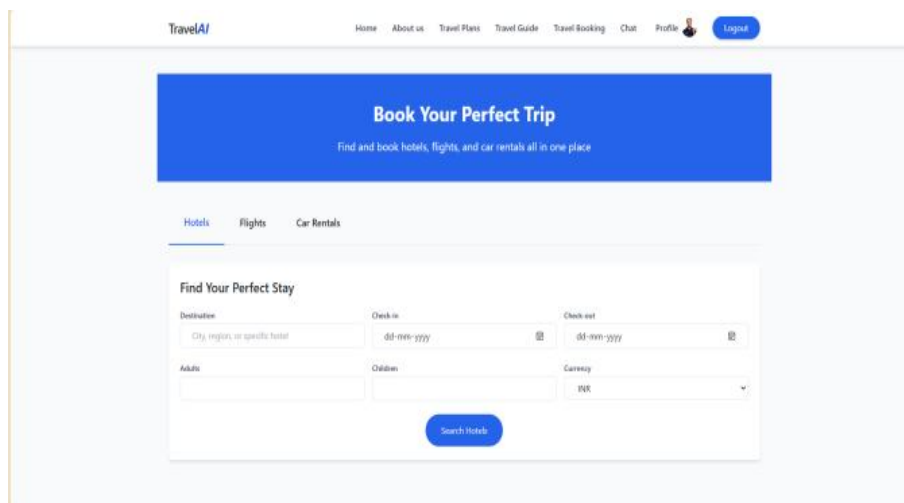


Fig 6 Booking Interface

In Figure 6 illustrates the booking interface, where users can finalize reservations for hotels, flights, and car rentals. The system integrates third-party booking APIs to fetch real-time availability and prices, providing users with smooth and reliable end-to-end planning experience.

E. Chat Integration

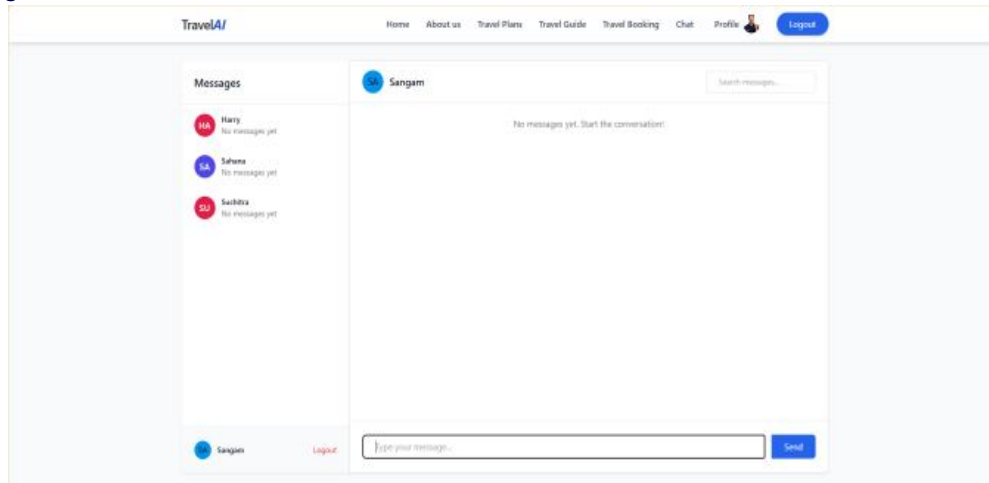


Fig 7 Chat Integration

In Figure 7 demonstrates the real-time chat interface. This module allows registered users to chat with each other to share travel tips, suggestions, or experiences.

F. User Profile

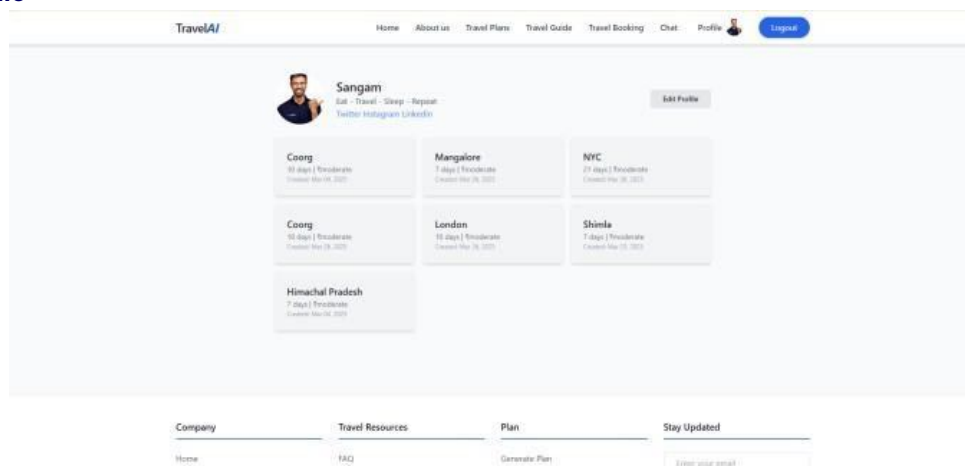


Fig 8 User Profile

In Figure8 demonstrate show users can maintain their profile and visit the saved travel plans.

VI. PERFORMANCE ANALYSIS

The Table 1 evaluates the system's effectiveness, key features were tested across multiple dimensions. AI-generated travel plans were assessed for accuracy, relevance, and personalization. The real-time group chat was analyzed based on message delivery speed and latency. API-based travel bookings were evaluated for response time and success rate. Security of user authentication and the quality of the integrated travel guide were also measured.

Table1 System Performance

Component	EvaluationCriteria	Result
AIPlan Generation	Relevance,accuracy, personalization	90% relevant and helpful
ChatFeature	Latency, real-time message delivery	Average latency: 100ms
Booking API Integration	Success rate, response time	95% success rate, 5-7savg
Travel Guide	Relevance,accuracy	88-90% relevant
User authentication	Secure,safe	100%secure

VII. CONCLUSION AND FUTURE ENHANCEMENT

A. Conclusion

AI Powered Travel Planning demonstrates the power of AI in simplifying the travel planning experience. By integrating AI-generated itineraries, real-time chat, and seamless booking services, the system offers a comprehensive solution for personalized and collaborative travel planning. It leverages cutting-edge technologies to streamline the entire process, from destination selection to finalizing travel logistics, making it accessible and efficient for users with varying levels of experience.

Key achievements include:

- Dynamic, personalized travel plan generation using Google Gemini, allowing users to receive customized itineraries based on their preferences and constraints.



- Integrated real-time group chat that enhances collaboration, enabling travelers to coordinate, discuss, and make decisions together without leaving the platform.
- External API integration for travel bookings, including flights, hotels, and activities, ensuring a one-stop experience that minimizes the need for multiple apps or services.
- A user-friendly interface designed for ease of navigation and accessibility, encouraging engagement and reducing the time and effort needed to plan complex trips.
- Scalable architecture that allows for future expansion, such as adding multi-lingual support, budget optimization tools, and AI-driven travel recommendations based on user history and trends.

B. Future Work

- Enhanced Personalization: Use machine learning to learn from previous plans and improve recommendations.
- Mobile App Development: Extend functionality to Android/iOS platforms for better accessibility.
- Voice Assistant Integration: Add voice support for hands-free planning.
- Dynamic Pricing Alerts: Notify users of changes in hotel/flight prices.
- Multilingual Support: Add translation features for global users.

REFERENCES

1. "NESDC ECONOMIC REPORT," Office of the National Economic and Social Development Council, 5 January 2023.
2. Taylor, K., Lim, K.H., Chan, J.: Travel itinerary recommendations with must-see points-of interest. In: Companion Proceedings of the Web Conference 2018, pp.1198–1205(2018)
3. H.-C.Kang,K.-B.Kang,D.-H.Kim,M.-C.Jwa,T. S. Ko and J. -W. Jwa, "Smart tourism chatbot system using Multi-domain Tourism Information DST," 2023 Fourteenth International Conference on Ubiquitous and Future Networks (ICUFN), Paris, France, 2023, pp. 608- 612, <https://doi:10.1109/ICUFN57995.2023.10200288>.
4. S.Singh,R.Gupta,S.Panjabi,A. Tribhuvan andJ. Jesvani, "Place recommendation system," International Research Journal of Engineering and Technology (IRJET), vol. 4, pp. 367–369, March 2017.
5. Cooper C, Wanhill S, Fletcher J, Gilbert D, Fyall A. Tourism: Principles and Practice. 3rd ed.: Prentice Hall; 2006.
6. Rabira Jafri,Amal SaadAlkunji,GhadaKhaled Alhader: Smart travel Planner: A mashup of travel-related web services,2013
7. Z.Wang,F.Ye, J.Wang,andY.Zhang,"An intelligent personalized recommendation model for travelplanning," Journal of Ambient Intelligence and Humanized Computing, vol. 11, no. 9, pp. 4277- 4290,2020.<https://doi:10.1007/s12652-020-02276-3>
8. Santos F.,Almeida A.,Martins C.,Gonçalves R., MartinsJ.UsingPOIfunctionalityandaccessibilitylevels for delivering personalized tourism recommendations. Computers, Environment and Urban Systems .2019;77 <https://doi:10.1016/j.compenvurbsys.2017.08.007.101173>
9. M.Jovanovic, and M.Campbell, "Generative artificial intelligence: Trends and prospects ," IEEE Computer, vol. 55,no.10,pp.107-112,Oct.2022,doi:10.1109/MC.2022.3192720.
10. Smith.,&Williams,A.(2022).Building Cross Platform Mobile Apps with React Native. Springer. Django Official Documentation: <https://docs.djangoproject.com/en/5.2/>